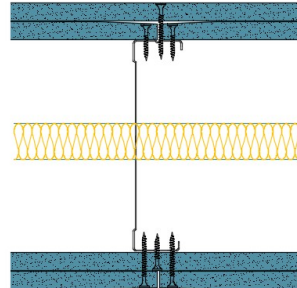


## 146-S-59(25) - SPEEDLINE System Data Sheet - Version V1 (24-10-23)

SPEEDLINE 146mm 'C' Stud Partition @600mm  
Ctrs, with 2x Siniat GTEC 12.5mm dB Board each  
side, 25mm APR



### System Performance Breakdown

Fire Resistance:

BS476 Part 22:1987:

Test Ref & Date or Applied Ref & Report:

Max Height:

Thickness:

Duty Grade: BS 5234: Part 2:1992:

Sound Insulation:

**60/60 Minutes** (Integrity/Insulation).

**BRE 277436C - BRE Report P102396-1011C**

**Refer to Speedline Specification Clause**

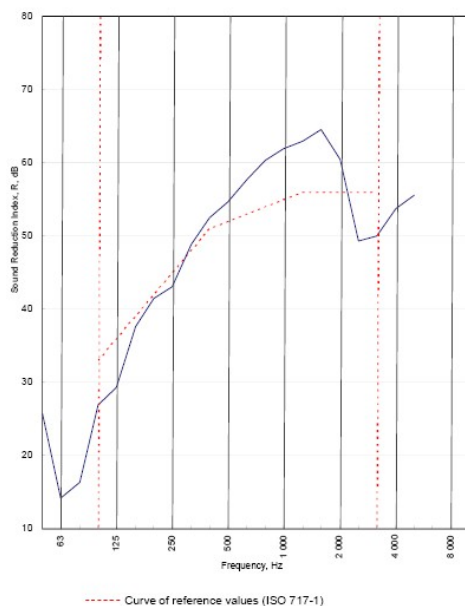
**198 mm.** (At Base Track, Excluding Finishes)

**Severe - Annexes A-F**

**52  $R_w$ dB**, Date Tested or Assessed Against - 70-S-59(25)

Test Code:  
H17556AA  
Test Date:  
26/08/2011

Freq. Hz	R dB
50	25.8
63	14.2
80	16.3
100	26.9
125	29.3
160	37.6
200	41.5
250	43.1
315	48.9
400	52.5
500	54.6
630	57.7
800	60.4
1 000	61.9
1 250	63.0
1 600	64.6
2 000	60.5
2 500	49.3
3 150	50.0
4 000	53.8
5 000	55.6
6 300	
8 000	
10 000	




Rating according to BS EN ISO 717-1:1997	<b><math>R_w</math> (C;Ctr) = 52 (-3;-8) dB</b>		
Evaluation based on laboratory measurement results obtained by an engineering method:	$C_{50-150} = -7$ dB	$C_{50-500} = -6$ dB	$C_{100-500} = -2$ dB
	$C_{7,50-150} = -18$ dB	$C_{2,50-500} = -18$ dB	$C_{1,100-500} = -8$ dB

TESTED AT ONE OF THE UKAS ACCREDITED LABORATORIES BELOW

B.T.C (H-Ref on Graph) 

B.R.E 

AIRO 

S.R.L   




Customer: Metsec plc Hepsec Division

BTC 17556A: Page 9 of 11

SPEEDLINE Drywall Systems, Adsetts House, 16 Europa View, Sheffield Business Park, Sheffield, S9 1XH.

Tel: 0114 231 8030.

Email: [enquiries@speedlinedrywall.co.uk](mailto:enquiries@speedlinedrywall.co.uk)

(As per the requirements set out in ISO/IEC 17025:2017 regarding test data the results stated have been carried out by voestalpine Metsec plc as part of the contract to supply Speedline Metal Sections to SIG Plc)